

Mod.

# GMDX-RFM90°C

Getto multiplo quadrante asciutto  
Multi jet-super dry



M-Bus

M-Bus  
wireless

OMS®



## Mod. GMDX-RFM 90°C

Getto multiplo, quadrante asciutto, lettura diretta. Realizzato nella versione per acqua calda (90°C) nei calibri da  $\varnothing$  15 a 50 mm (1/2"  $\div$  2"). Esclusi rischi di corrosione e sedimentazione. Dispositivo antimagnetico a richiesta. Garanzia di lunga durata ed elevata precisione. Nuova versione con predisposizione per modulo M-BUS radio e M-BUS a filo.

## Mod. GMDX-RFM 90°C

Multi jet, dry dial, direct reading. Made in the version for hot water (90°C) in the diameters 15 to 50 mm (1/2"  $\div$  2"). Risks of corrosion and sedimentation are excluded. Antimagnetic insert upon request. Guaranteed long durability and elevated precision. New version prearranged for radio M-BUS or wired M-BUS modules.

## Mod. GMDX-RFM 90°C

Chorro múltiple, esfera seca, lectura directa. Fabricado en la versión para agua caliente (90°C) en los calibres de  $\varnothing$  15 a 50 mm (1/2"  $\div$  2"). Libre de riesgos de corrosión y sedimentación. Bajo demanda se suministra con dispositivo antimagnético. Garantía de larga duración y elevada precisión. Nueva Versión preparada para modulo M-BUS radio o M-BUS por cable.

## Mod. GMDX-RFM 90°C

Vielfachwasserstrahl, trockenes Zifferblatt, Direktablesung. Produziert in den Versionen Warmwasser (90°C) in den Durchmessern von 15 bis 50 mm (1/2 Zoll  $\div$  2 Zoll). Die Risiken von Rost und Ablagerungen sind ausgeschlossen. Anti-magnetische Vorrichtung auf Anfrage. Garantiert lange Haltbarkeit und erhöhte Genauigkeit. Neue Version mit Anlage für M-bus Radio Modul oder M-bus via Kabel.

## Mod. GMDX-RFM 90°C

Jets multiples, cadran sec à lecture directe, disponible en la version pour eau chaude (90°C) et du calibre 15 au calibre 50 mm (de 1/2" à 2"), exclus tous problèmes de corrosion et d'incrustation, équipé d'un système antimagnétique sur demande, fiabilité dans le temps et précision élevée. Nouvelle version préparé pour module M-BUS radio ou M-BUS câblé.

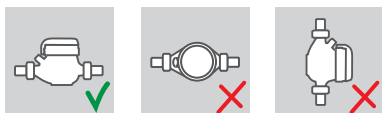
## Mod. GMDX-RFM 90°C

Многоструйный счетчик с сухим квадрантом и прямым считыванием. Выпускается в версии для горячей (90°C) воды диаметрами условного прохода от 15 до 50 мм (1/2" – 2"). Исключены риски коррозии и образования осадка. Антимангнитная защита – по запросу. Гарантия долговечности и высокой точности. Новая модель, предназначенная для установки проводного или радио- модулей системы M-BUS.

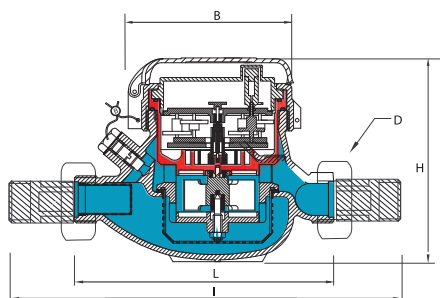
## Caratteristiche tecniche - Technical features

Calibro Size	DN	mm in	15 (1/2")	20 (3/4")	25 (1")	32 (1 1/4")	40 (1 1/2")	50 (2")
Portata di sovraccarico Overload flow rate	Q <sub>4</sub>	m <sup>3</sup> /h	3,125	5	7,875	12,5	20	31,25
Portata permanente Permanent flow rate	Q <sub>3</sub>	m <sup>3</sup> /h	2,5	4	6,3	10	16	25
Portata di transizione Transitional flow rate	Q <sub>2</sub>	l/h	80	128	202	320	512	800
Portata minima Min flow rate	Q <sub>1</sub>	l/h	50	80	126	200	320	500
Sensibilità Sensitivity		l/h	6	6	10	10	20	20
Letture minima Min reading		l	0,05	0,05	0,05	0,05	0,05	0,05
Letture massima Max reading		m <sup>3</sup>	99.999	99.999	99.999	99.999	999.999	999.999
Pressione max ammissibile Max admissible pressure MAP		bar	16	16	16	16	16	16

## Posizione d'installazione Installation position



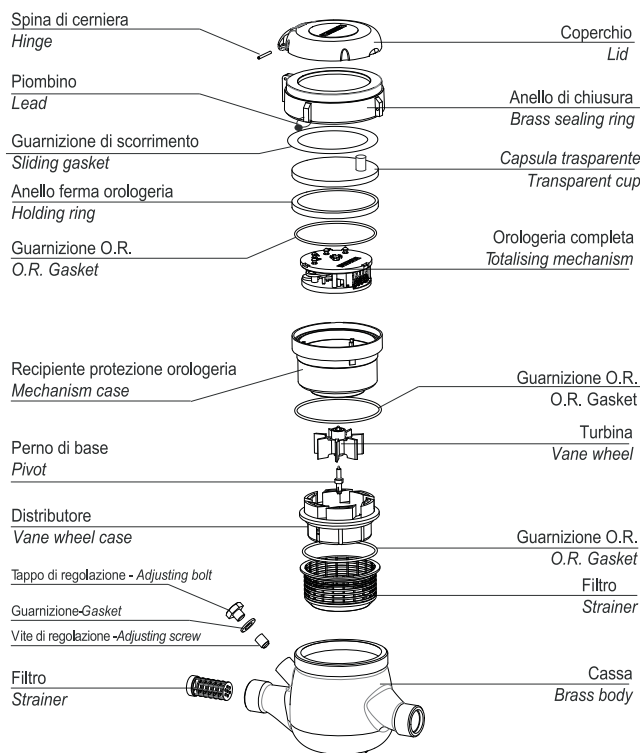
## Dimensioni e pesi - Dimensions and Weights



Calibro Size	mm in	15 (1/2")	20 (3/4")	25 (1")	32 (1 1/4")	40 (1 1/2")	50 (2")
L	mm	145-165-190	190	260	260	300	300
l	mm	225-245-270	290	360	380	440	460
H	mm	109	111	117	117	153	172
B	mm	100	100	104	104	126	160
D Filettatura Threading	mm	3/4"	1"	1"1/4"	1"1/2"	2"	2"1/2"
Pesi Weight	kg	1,35	1,45	2,04	2,11	4,58	7,25

Filettatura - Threading EN ISO 228-1:2000

I contatori DN 50 possono essere forniti flangiati secondo ISO 7005-2 / EN 1092-2 PN16  
The DN50 meters can be supplied flanged according to ISO 7005-2 / EN 1092-2 PN16



## Versione base - Basic version

- » MID R50-H 2004/22/CE
- » Corredato da porta ottica e predisposizione per l'installazione dei moduli di comunicazione HYDROLINK modello RFM-MB2 ed RFM-TX2
- » Disponibile in versione per acqua fredda 0°C-30°C
- » Trasmissione magnetica
- » Lettura diretta su 5 rulli numeratori (6 rulli numeratori su DN40 e DN50)
- » Quadrante asciutto
- » Con coperchio

- » MID R50-H 2004/22/CE
- » Complete with optical port and prearrangement for the HYDROLINK communication modules model RFM-MB2 and RFM-TX2
- » Available for cold water 0°C-30° C
- » Magnetic transmission
- » Direct reading on 5 numeric rolls (6 numeric rolls on DN40 and DN50)
- » Dry dial
- » With lid

## Su richiesta - Upon request

- » Protezione anti frode magnetica
- » Anti-magnetic fraud protection